



SWIS Summary

2021–22 Academic Year

4233 Schools | 2,148,441 Students | 1,285,434 Major ODRs

Data Reported: September 2022

MAJORS ONLY

Grade Range	Number of Schools	Mean Enrollment per School	Mean ODRs/100 Students/School Day	Median ODRs/100 Students/School Day	25th Percentile ODRs/100 Students/School Day	75th Percentile ODRs/100 Students/School Day
K-6	2677	423	.34 (.53)	.19	.08	.40
6-9	720	609	.49 (.53)	.33	.16	.63
9-12	407	982	.43 (.59)	.25	.12	.47
PreK-8	256	436	.37 (.59)	.19	.10	.45

ODR = office discipline referral; (#) = standard deviation; Shaded column = most useful for decision making

continued on next page

MINORS ONLY

Grade Range	Number of Schools	Mean Enrollment per School	Mean ODRs/100 Students/School Day	Median ODRs/100 Students/School Day	25th Percentile ODRs/100 Students/School Day	75th Percentile ODRs/100 Students/School Day
K-6	2369	421	.41 (.55)	.24	.10	.51
6-9	624	596	.61 (.85)	.40	.18	.75
9-12	336	941	.34 (.64)	.16	.05	.36
PreK-8	233	424	.57 (.84)	.32	.14	.75

ODR = office discipline referral; (#) = standard deviation; Shaded column = most useful for decision making

IN-SCHOOL SUSPENSIONS

Grade Range	Number of Schools	Mean Enrollment per School	Mean Count of Students with ISS/100 Students	Mean Count of ISS Events/100 Students	Mean Count of Days of ISS
K-6	2677	423	1.37 (2.54)	2.08 (4.99)	2.06 (7)
6-9	720	609	7.74 (8.27)	14.18 (19.73)	20.9 (35.80)
9-12	407	982	6.20 (6.99)	11.36 (18.05)	17.14 (31.19)
PreK-8	256	436	2.98 (3.86)	4.48 (6.94)	4.09 (7.94)

ISS = in-school suspension; (#) = standard deviation

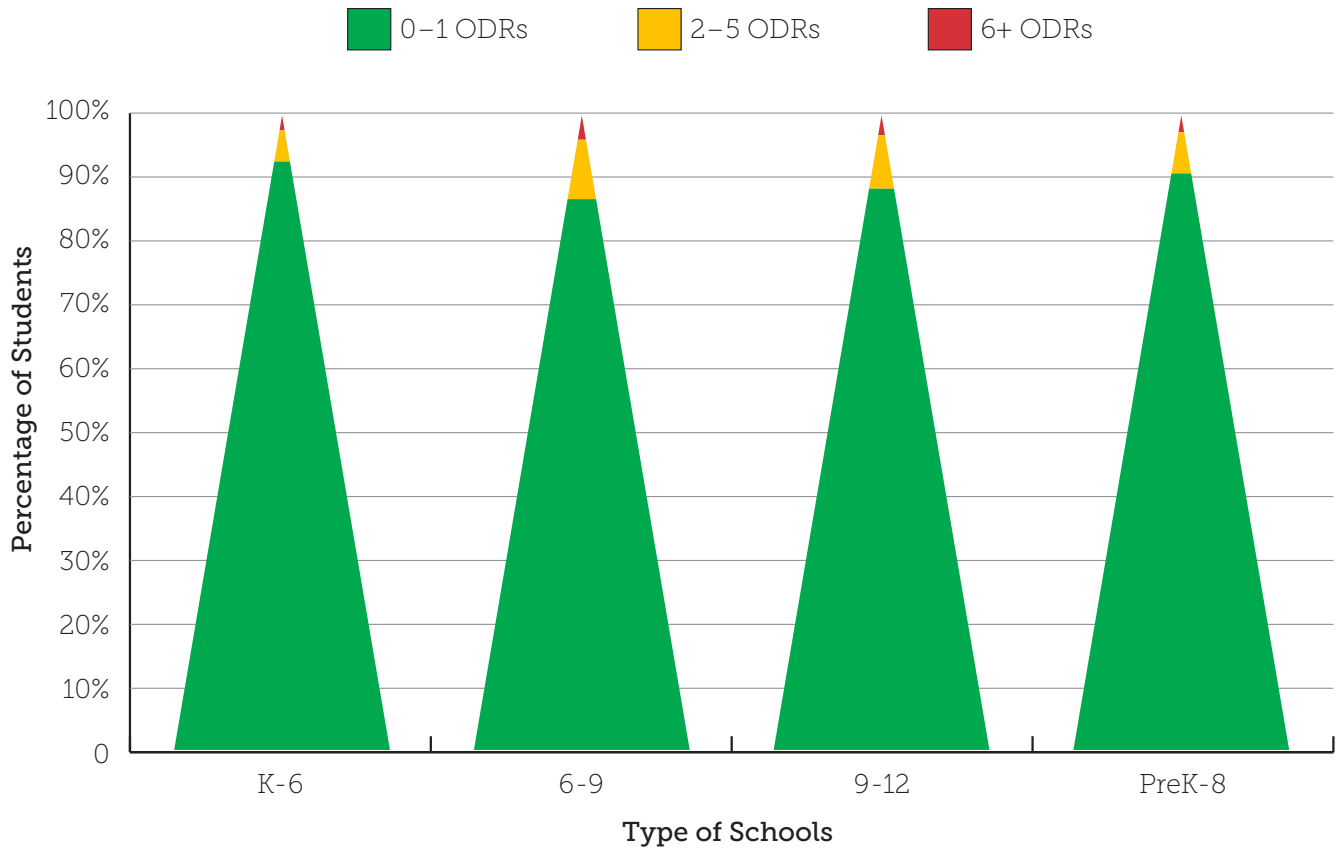
OUT-OF-SCHOOL SUSPENSIONS

Grade Range	Number of Schools	Mean Enrollment per School	Mean Count of Students with OSS/ 100 Students	Mean Count of OSS Events/100 Students	Mean Count of Days of OSS
K-6	2677	423	1.95 (3.13)	3.41 (6.65)	5.51 (13.54)
6-9	720	609	8.70 (8.50)	15.38 (18.24)	44.57 (62.91)
9-12	407	982	7.57 (7.01)	12.21 (14.72)	43.17 (60.34)
PreK-8	256	436	3.29 (4.53)	5.33 (8.96)	11.46 (21.08)

OSS = out-of-school suspension; (#) = standard deviation

continued on next page

MAJOR ODRs/GRADE LEVEL (TRIANGLE)

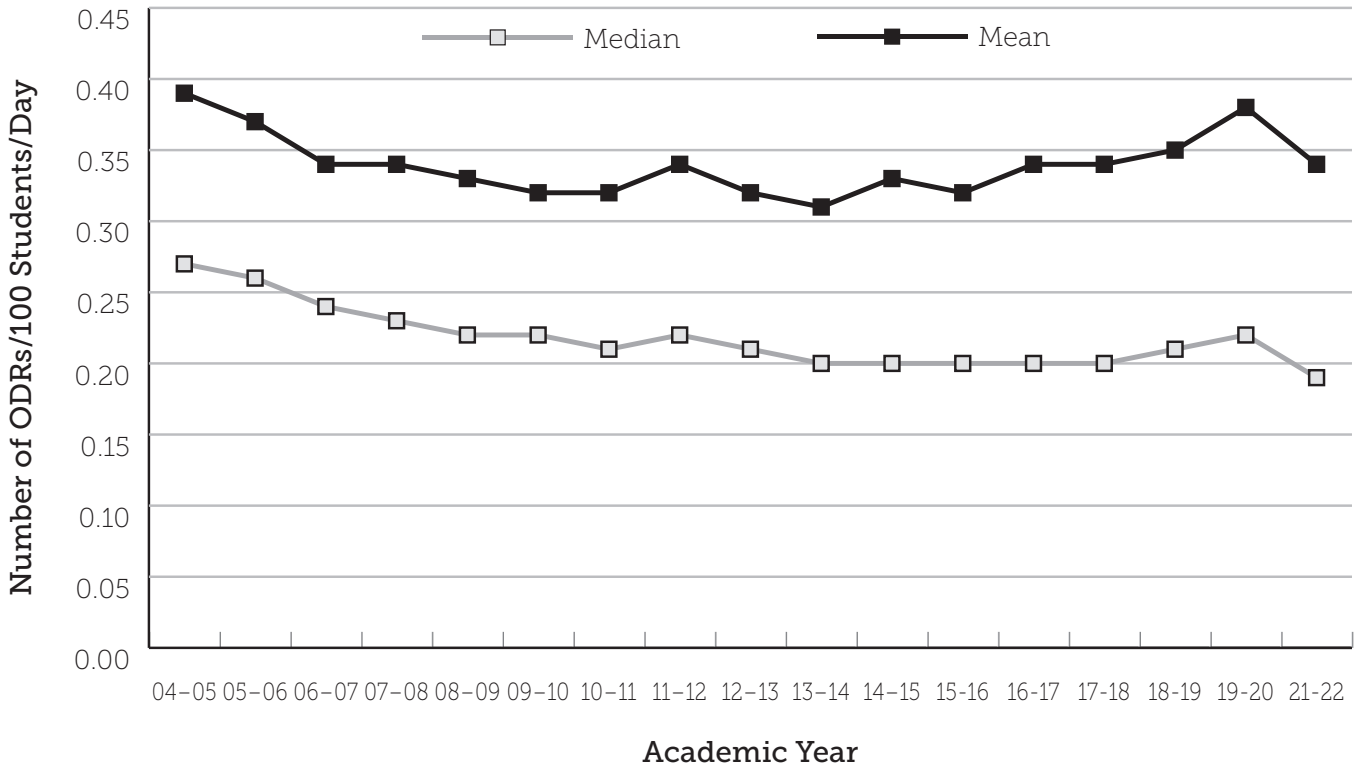


MAJOR ODRs/GRADE LEVEL

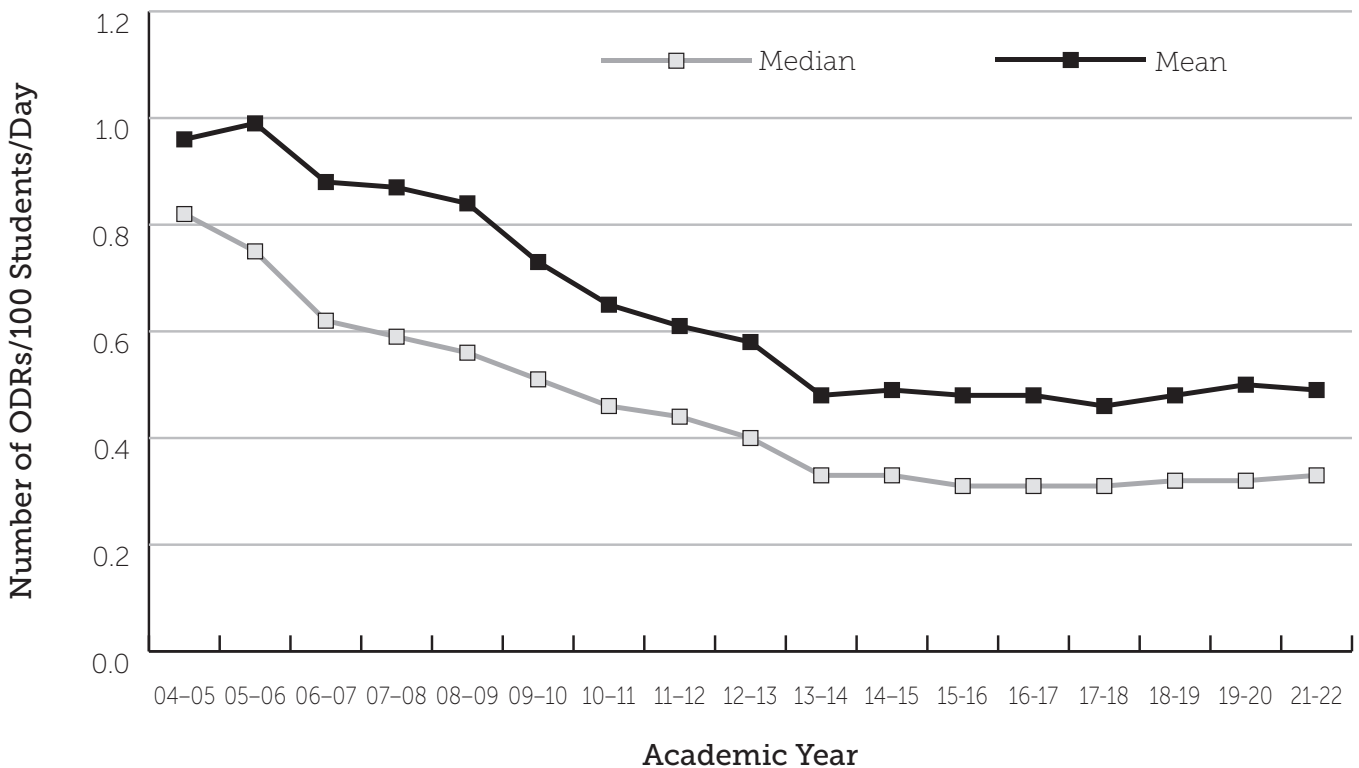
Grade Range	Number of Schools	Mean Enrollment per School	Mean Percent of Students with 0-1 ODRs	Mean Percent of Students with 2-5 ODRs	Mean Percent of Students with 6+ ODRs
K-6	2677	423	92.71%	4.93%	2.36%
6-9	720	609	86.80%	9.37%	3.83%
9-12	407	982	88.44%	8.42%	3.14%
PreK-8	256	436	90.85%	6.49%	2.67%

ODR = office discipline referral

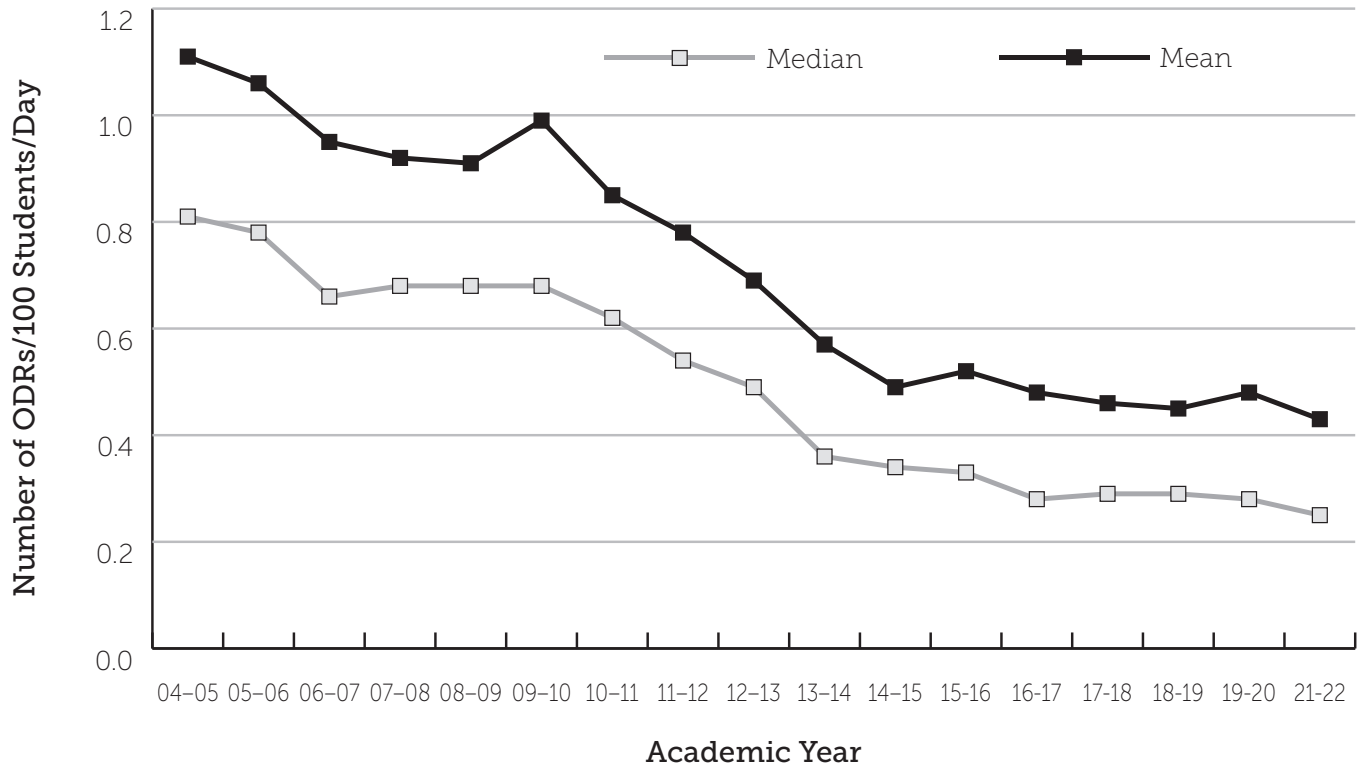
**ELEMENTARY SCHOOL HISTORICAL TREND,
NATIONAL MEDIAN AND MEAN MAJOR ODRs/100 STUDENTS/DAY**



**MIDDLE SCHOOL HISTORICAL TREND,
NATIONAL MEDIAN AND MEAN MAJOR ODRs/100 STUDENTS/DAY**



**HIGH SCHOOL HISTORICAL TREND,
NATIONAL MEDIAN AND MEAN MAJOR ODRs/100 STUDENTS/DAY**



Note: Due to the large variations in learning modalities (e.g., remote, in-person) between communities caused by the COVID-19 pandemic, data from the 2020-21 school year are not included in the historical trend graphs.

PBISApps.org is the home of web-based applications used by schools, districts, regions, and states in the US and abroad as part of their on-going decision-making processes.

Educators have been using PBISApps for over ten years to make schools safer, more

productive learning environments — empowering them to make data-based decisions in real time.

PBISApps.org is run by Educational & Community Supports, a research unit at the University of Oregon.



www.pbisapps.org | 855-455-8194