

SWIS Summary

2018–19 Academic Year

5446 Schools | 2,985,389 Students | 1,805,851 Major ODRs*

Data Reported: November 2019

MAJORS ONLY

Grade Range	Number of Schools	Mean Enrollment per School	Mean ODRs/100 Students/School Day	Median ODRs/100 Students/School Day	25th Percentile ODRs/100 Students/School Day	75th Percentile ODRs/100 Students/School Day
K-6	3564	464	.35 (.48)	.21	.10	.41
6-9	1003	647	.48 (.52)	.32	.17	.64
9-12	533	976	.45 (.54)	.29	.14	.55
PreK-8	346	461	.42 (.67)	.24	.11	.49

ODR=office discipline referral; (#)=standard deviation; Shaded column=most useful for decision making

**PreK-12 data are no longer included in this report.*

The small number of schools and wide variations in data patterns make them unsuitable for decision making.

continued on next page

MINORS ONLY

Grade Range	Number of Schools	Mean Enrollment per School	Mean ODRs/100 Students/School Day	Median ODRs/100 Students/School Day	25th Percentile ODRs/100 Students/School Day	75th Percentile ODRs/100 Students/School Day
K-6	3012	459	.45 (.67)	.26	.10	.56
6-9	803	622	.64 (.87)	.36	.14	.79
9-12	391	906	.38 (.66)	.18	.06	.42
PreK-8	287	445	.62 (1.0)	.36	.14	.79

ODR=office discipline referral; (#)=standard deviation; Shaded column=most useful for decision making

IN-SCHOOL SUSPENSIONS

Grade Range	Number of Schools	Mean Enrollment per School	Mean Count of Students with ISS/100 Students	Mean Count of ISS Events/100 Students	Mean Count of Days of ISS
K-6	3564	464	1.93 (3.25)	3.14 (6.86)	2.94 (7.57)
6-9	1003	647	9.12 (8.64)	17.53 (22.13)	25.73 (38.85)
9-12	533	976	7.95 (8.62)	15.77 (23.51)	21.99 (33.15)
PreK-8	346	461	3.61 (5.09)	5.98 (10.35)	6.63 (11.96)

ISS=in-school suspension; (#)=standard deviation

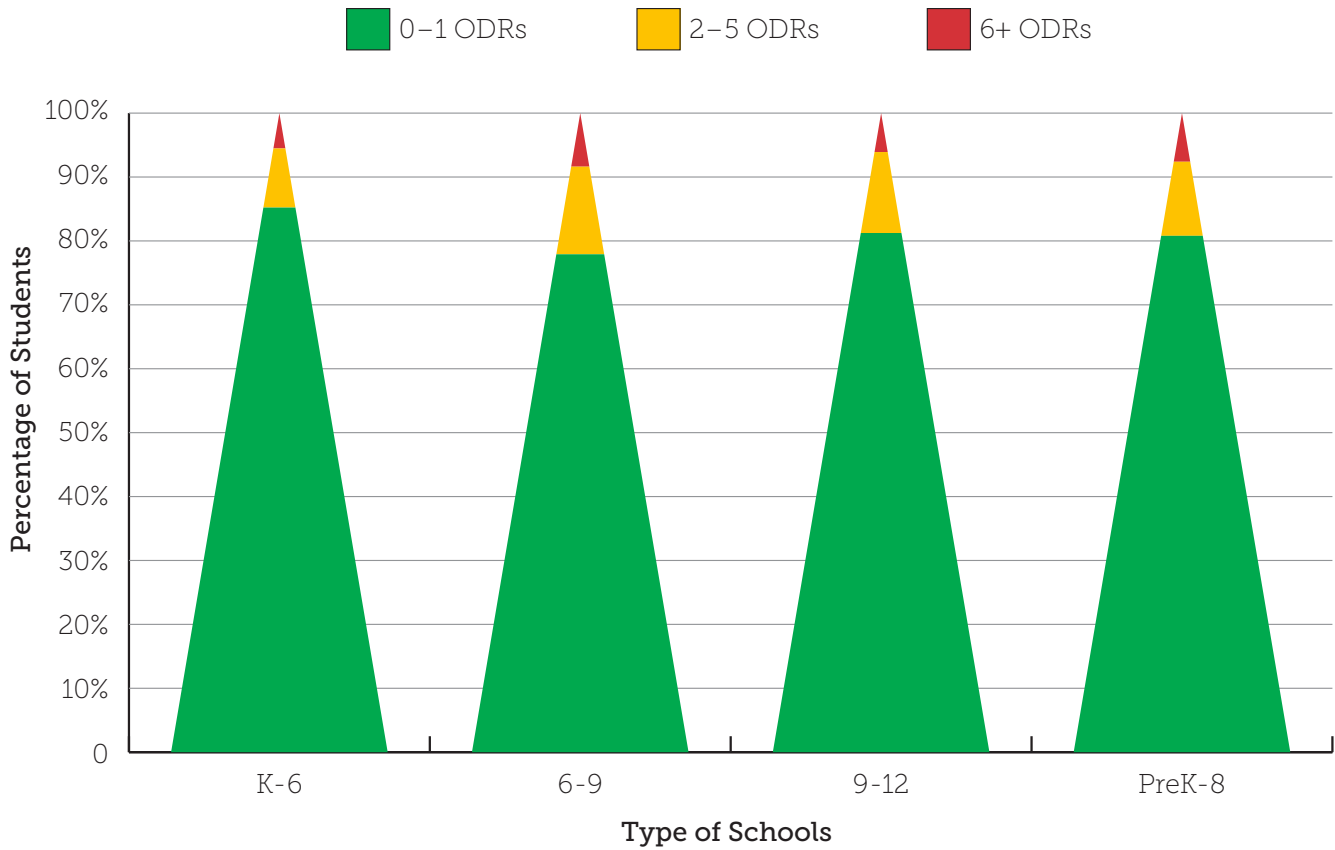
OUT-OF-SCHOOL SUSPENSIONS

Grade Range	Number of Schools	Mean Enrollment per School	Mean Count of Students with OSS/ 100 Students	Mean Count of OSS Events/100 Students	Mean Count of Days of OSS
K-6	3564	464	2.46 (3.95)	4.59 (9.48)	7.36 (19.59)
6-9	1003	647	8.03 (7.77)	14.21 (17.94)	37.35 (50.08)
9-12	533	976	7.54 (8.53)	11.83 (15.89)	39.00 (56.26)
PreK-8	346	461	3.89 (4.83)	6.55 (10.20)	13.09 (22.79)

OSS=out-of-school suspension; (#)=standard deviation

continued on next page

MAJOR ODRs/GRADE LEVEL (TRIANGLE)

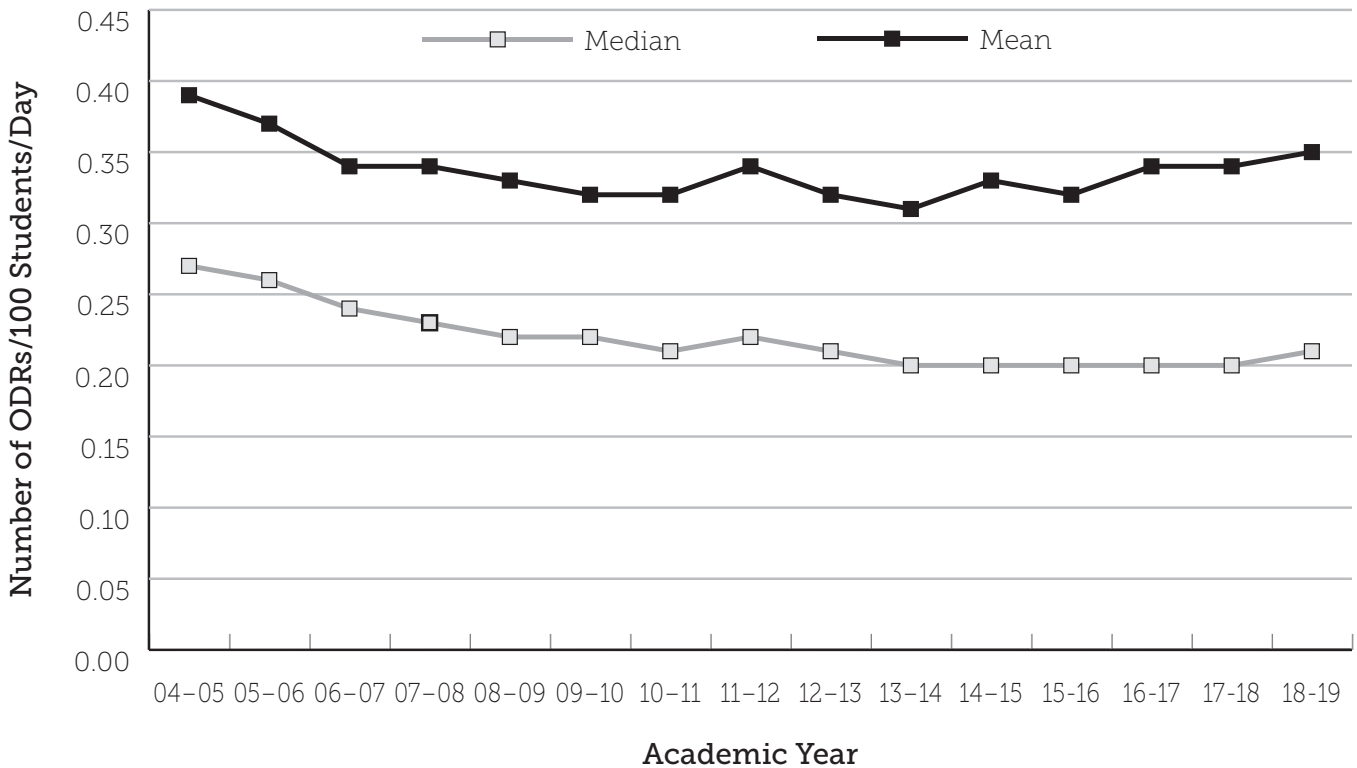


MAJOR ODRs/GRADE LEVEL

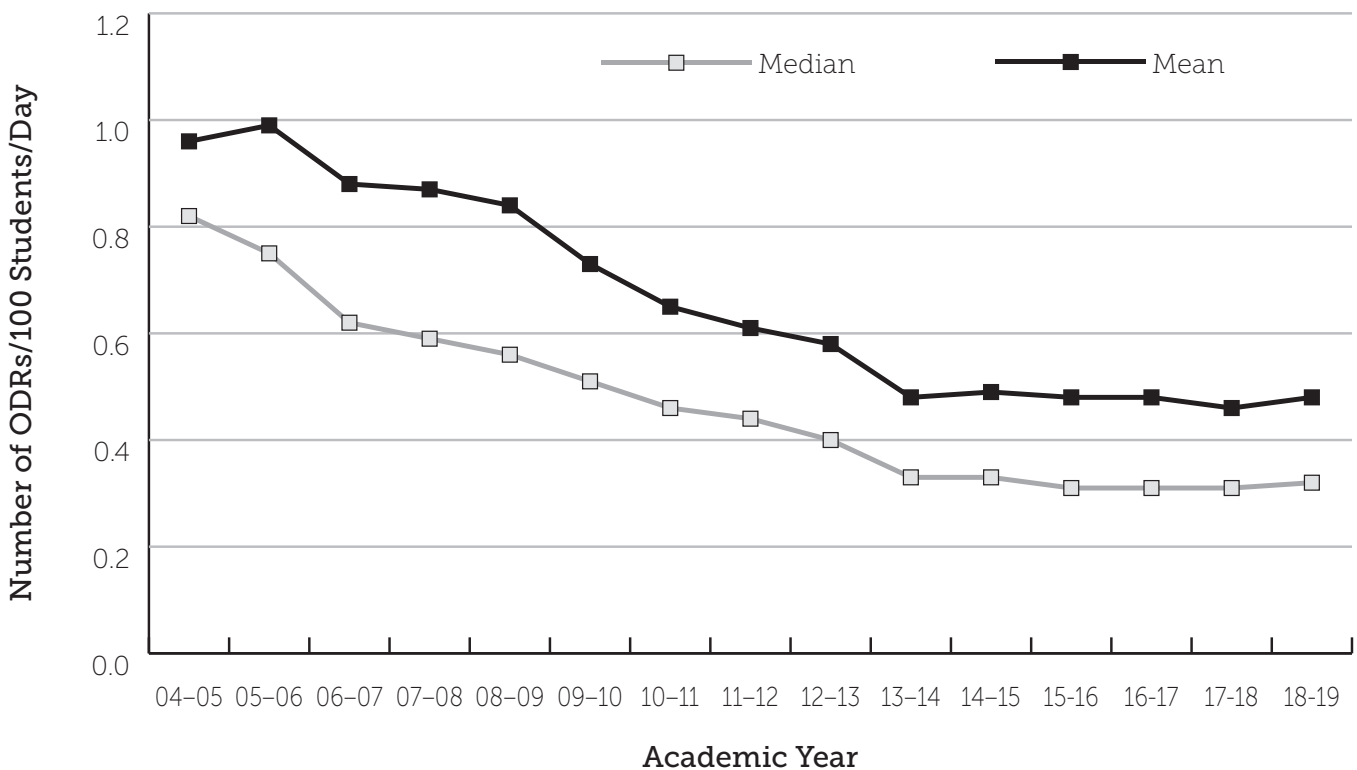
Grade Range	Number of Schools	Mean Enrollment per School	Mean Percent of Students with 0-1 ODRs	Mean Percent of Students with 2-5 ODRs	Mean Percent of Students with 6+ ODRs
K-6	3564	464	85.22%	9.25%	5.53%
6-9	1003	647	77.91%	13.71%	8.38%
9-12	533	976	81.24%	12.67%	6.09%
PreK-8	346	461	80.80%	11.59%	7.62%

ODR=office discipline referral

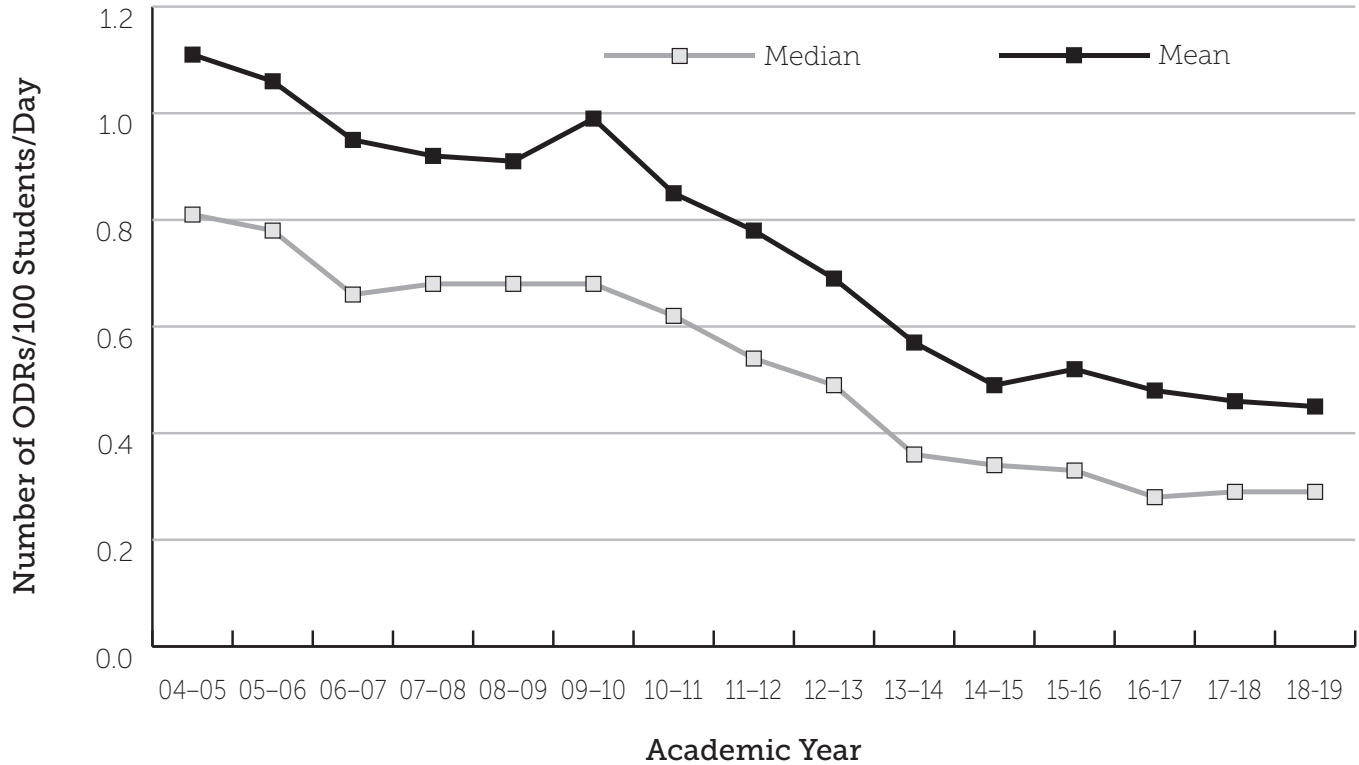
**ELEMENTARY SCHOOL HISTORICAL TREND,
NATIONAL MEDIAN AND MEAN MAJOR ODRs/100 STUDENTS/DAY**



**MIDDLE SCHOOL HISTORICAL TREND,
NATIONAL MEDIAN AND MEAN MAJOR ODRs/100 STUDENTS/DAY**



**HIGH SCHOOL HISTORICAL TREND,
NATIONAL MEDIAN AND MEAN MAJOR ODRs/100 STUDENTS/DAY**



PBISApps.org is the home of web-based applications used by schools, districts, regions, and states in the US and abroad as part of their on-going decision-making processes.

Educators have been using PBISApps for over ten years to make schools safer, more

productive learning environments — empowering them to make data-based decisions in real time.

PBISApps.org is run by Educational & Community Supports, a research unit at the University of Oregon.



www.pbisapps.org | 855-455-8194