

SWIS Summary

2016–17 Academic Year

5716 Schools | 3,072,664 Students | 1,853,214 ODRs

Data Reported August 2017

MAJORS ONLY

Grade Range	Number of Schools	Mean Enrollment per School	Mean ODRs/100 Students/School Day	Median ODRs/100 Students/School Day	25th Percentile ODRs/100 Students/School Day	75th Percentile ODRs/100 Students/School Day
K-6	3582	469	.34 (.60)	.20	.09	.39
6-9	1024	643	.48 (.67)	.31	.15	.57
9-12	526	931	.48 (.71)	.28	.16	.53
PreK-8	363	427	.55 (1.84)	.27	.12	.51
PreK-12	92	308	.90 (2.15)	.26	.15	.65

ODR=office discipline referral; (#)=standard deviation; Shaded column=most useful for decision making

continued on next page

MINORS ONLY

Grade Range	Number of Schools	Mean Enrollment per School	Mean ODRs/100 Students/School Day	Median ODRs/100 Students/School Day	25th Percentile ODRs/100 Students/School Day	75th Percentile ODRs/100 Students/School Day
K-6	2952	461	.44 (.73)	.25	.10	.54
6-9	786	606	.57 (.73)	.35	.13	.72
9-12	380	885	.39 (.66)	.17	.06	.43
PreK-8	308	427	.73 (2.14)	.31	.11	.64
PreK-12	84	309	.72 (.72)	.41	.20	.98

ODR=office discipline referral; (#)=standard deviation; Shaded column=most useful for decision making

IN-SCHOOL SUSPENSIONS

Grade Range	Number of Schools	Mean Enrollment per School	Mean Count of Students with ISS/100 Students	Mean Count of ISS Events/100 Students	Mean Count of Days of ISS
K-6	3582	469	1.99 (3.67)	3.33 (8.93)	3.09 (9.68)
6-9	1024	643	8.22 (8.96)	16.53 (25.44)	22.68 (37.85)
9-12	526	931	7.24 (8.21)	13.92 (20.48)	17.92 (28.18)
PreK-8	363	427	3.39 (4.92)	5.76 (12.28)	6.24 (17.10)
PreK-12	92	308	3.56 (4.83)	5.76 (11.14)	5.10 (8.63)

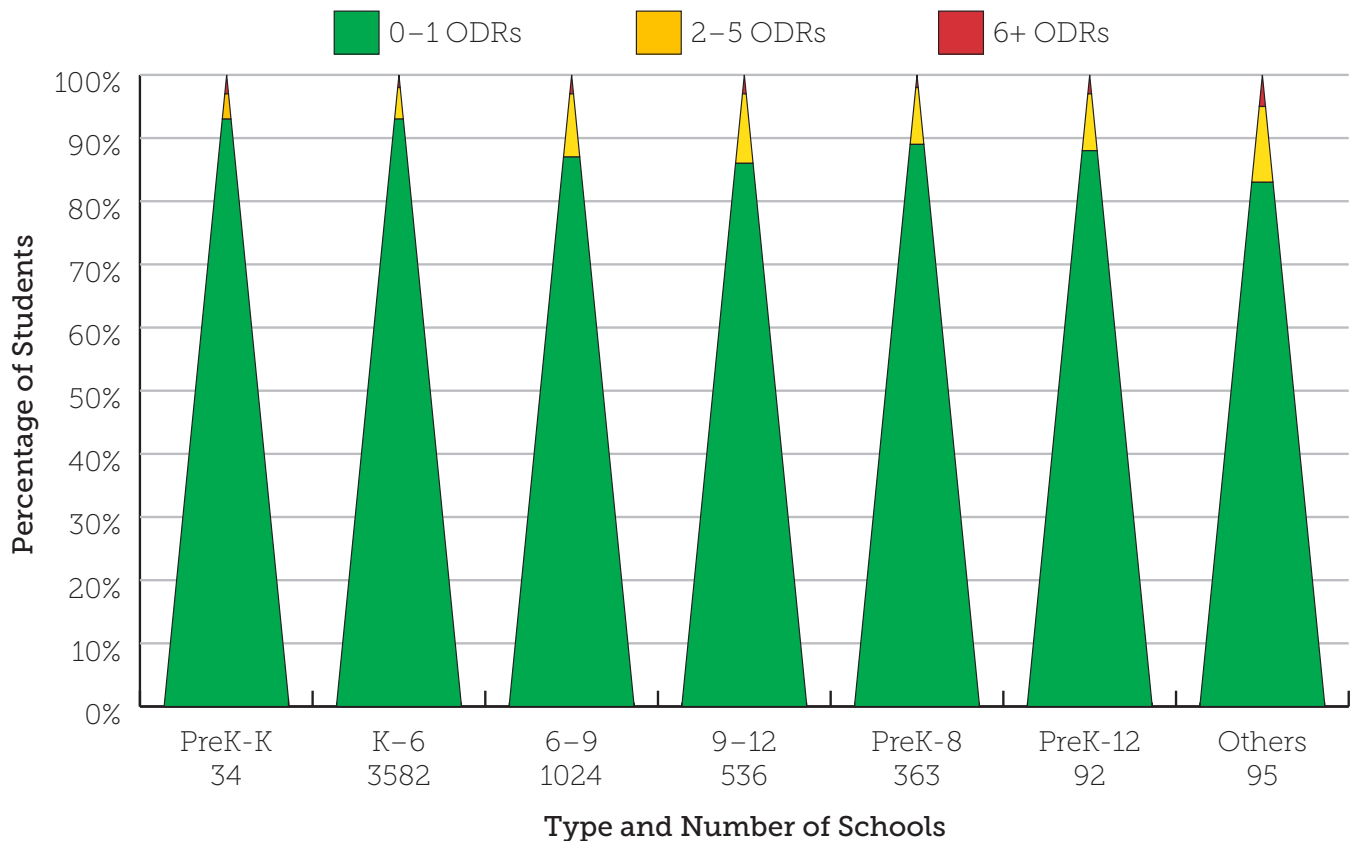
ISS=in-school suspension; (#)=standard deviation; ISS data revised August 2018

OUT-OF-SCHOOL SUSPENSIONS

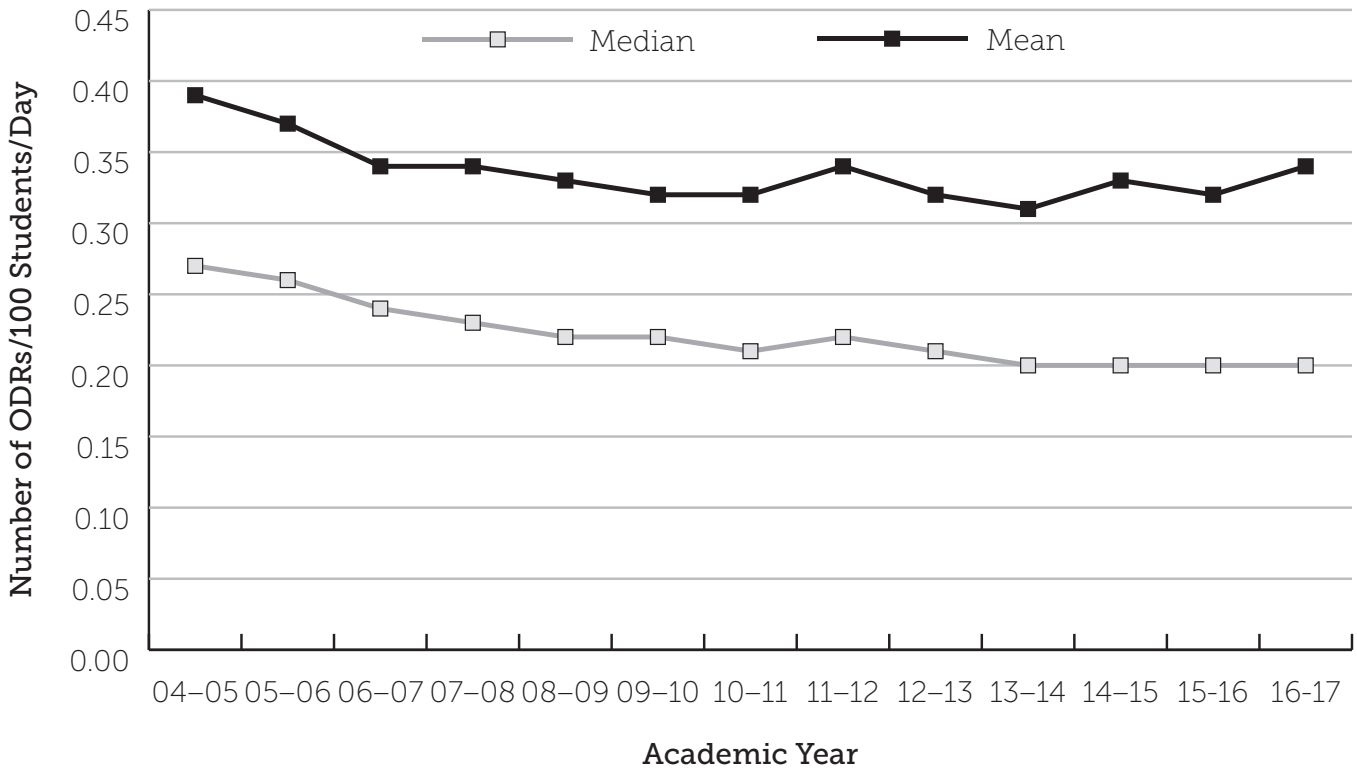
Grade Range	Number of Schools	Mean Enrollment per School	Mean Count of Students with OSS/ 100 Students	Mean Count of OSS Events/100 Students	Mean Count of Days of OSS
K-6	3582	469	2.30 (3.90)	4.21 (9.18)	6.51 (17.57)
6-9	1024	643	6.93 (7.32)	12.42 (17.51)	32.28 (49.98)
9-12	526	931	6.40 (6.47)	10.42 (13.60)	31.41 (42.94)
PreK-8	363	427	4.48 (6.17)	8.03 (13.64)	16.26 (31.05)
PreK-12	92	308	4.61 (5.76)	7.59 (11.03)	14.67 (24.35)

OSS=out-of-school suspension; (#)=standard deviation; OSS data revised August 2018

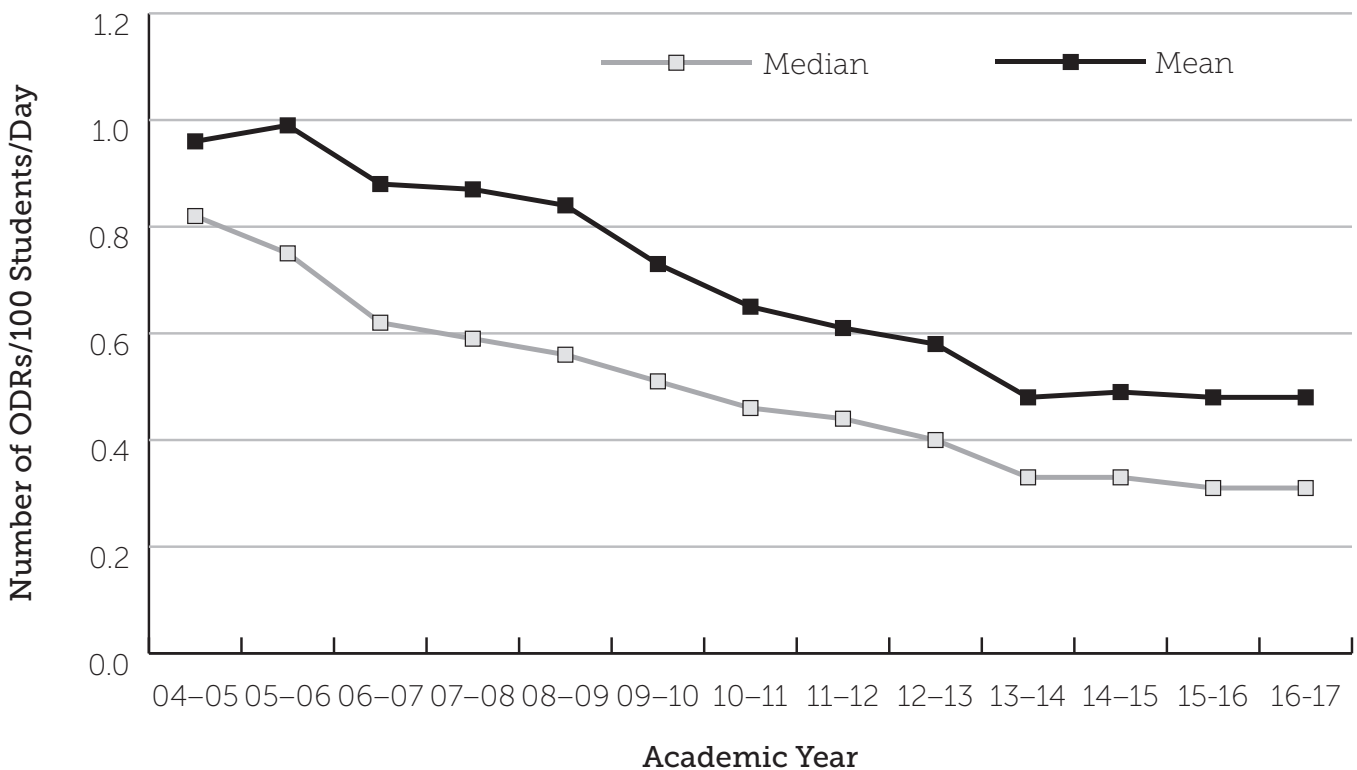
MAJOR ODRs/GRADE LEVEL (TRIANGLE)



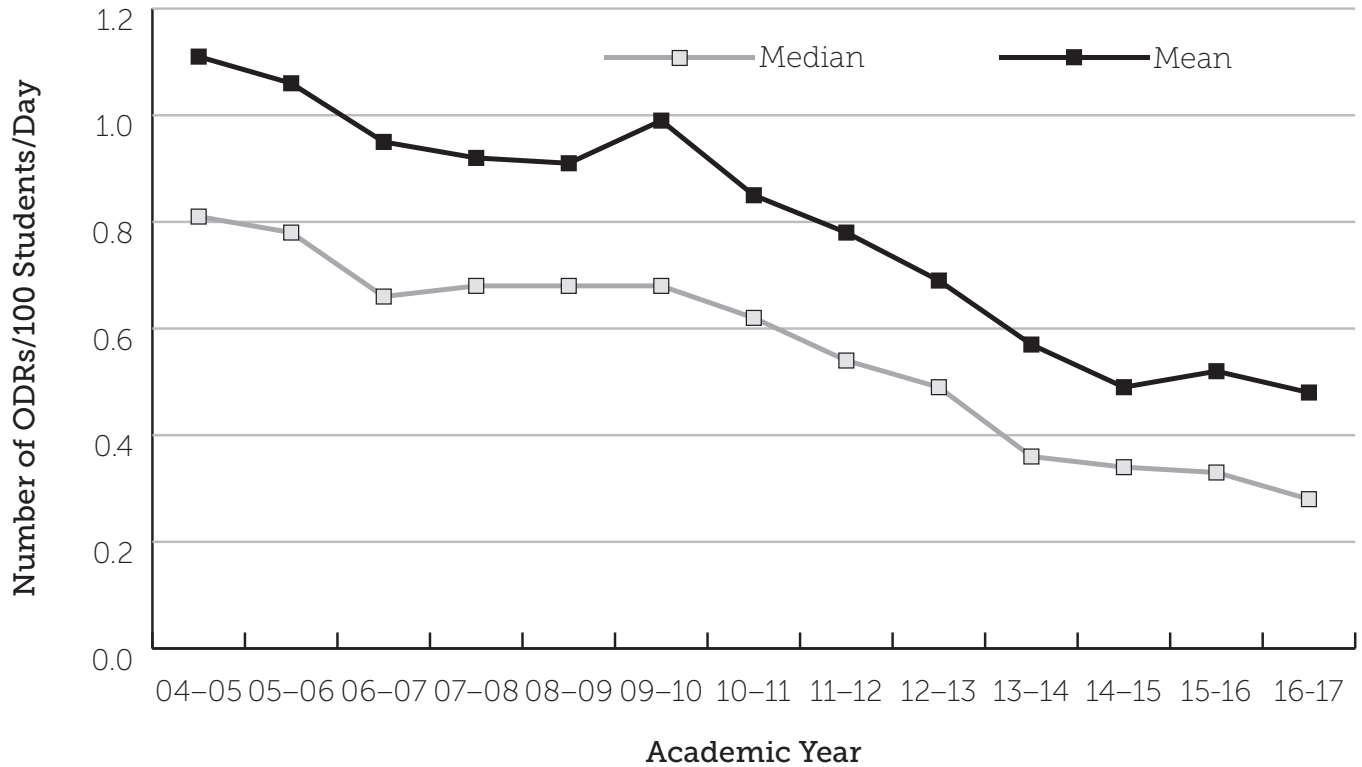
**ELEMENTARY SCHOOL HISTORICAL TREND,
NATIONAL MEDIAN AND MEAN MAJOR ODRs/100 STUDENTS/DAY**



**MIDDLE SCHOOL HISTORICAL TREND,
NATIONAL MEDIAN AND MEAN MAJOR ODRs/100 STUDENTS/DAY**



**HIGH SCHOOL HISTORICAL TREND,
NATIONAL MEDIAN AND MEAN MAJOR ODRs/100 STUDENTS/DAY**



PBISApps.org is the home of web-based applications used by schools, districts, regions, and states in the US and abroad as part of their on-going decision-making processes.

Educators have been using PBISApps for over ten years to make schools safer, more

productive learning environments — empowering them to make data-based decisions in real time.

PBISApps.org is run by Educational & Community Supports, a research unit at the University of Oregon.



www.pbisapps.org | 855-455-8194