

SWIS Summary

2014–15 Academic Year

4581 Schools | 2,440,743 Students | 1,472,544 ODRs

Data Reported August 2015

MAJORS ONLY

Grade Range	Number of Schools	Mean Enrollment per School	Mean ODRs/100 Students/School Day	Median ODRs/100 Students/School Day	25th Percentile ODRs/100 Students/School Day	75th Percentile ODRs/100 Students/School Day
K-6	2997	449	.33 (.49)	.20	.09	.40
6-9	849	663	.49 (.59)	.33	.16	.61
9-12	439	848	.49 (.48)	.35	.17	.65
PreK-8	302	425	.44 (1.04)	.26	.13	.50
PreK-12	74	308	.54 (.76)	.28	.12	.55

ODR=office discipline referral; (#)=standard deviation; Shaded column=most useful for decision making

continued on next page

MINORS ONLY

Grade Range	Number of Schools	Mean Enrollment per School	Mean ODRs/100 Students/School Day	Median ODRs/100 Students/School Day	25th Percentile ODRs/100 Students/School Day	75th Percentile ODRs/100 Students/School Day
K-6	2997	449	.49 (.41)	.26	.10	.58
6-9	849	663	.66 (.94)	.36	.13	.83
9-12	439	848	.45 (.73)	.21	.05	.52
PreK-8	302	425	.65 (1.20)	.29	.10	.76
PreK-12	74	308	.91 (1.25)	.55	.25	.99

ODR=office discipline referral; (#)=standard deviation; Shaded column=most useful for decision making

IN-SCHOOL SUSPENSIONS

Grade Range	Number of Schools	Mean Enrollment per School	Mean Count of Students with ISS/100 Students	Mean Count of ISS Events/100 Students	Mean Count of Days of ISS
K-6	2997	449	1.97 (3.30)	3.18 (6.97)	2.96 (8.77)
6-9	849	663	8.14 (8.49)	16.54 (24.71)	22.63 (39.44)
9-12	439	848	7.70 (8.72)	15.54 (23.69)	18.66 (28.41)
PreK-8	302	425	4.06 (5.11)	6.81 (11.29)	7.36 (14.04)
PreK-12	74	308	4.99 (7.48)	8.64 (17.10)	9.75 (23.56)

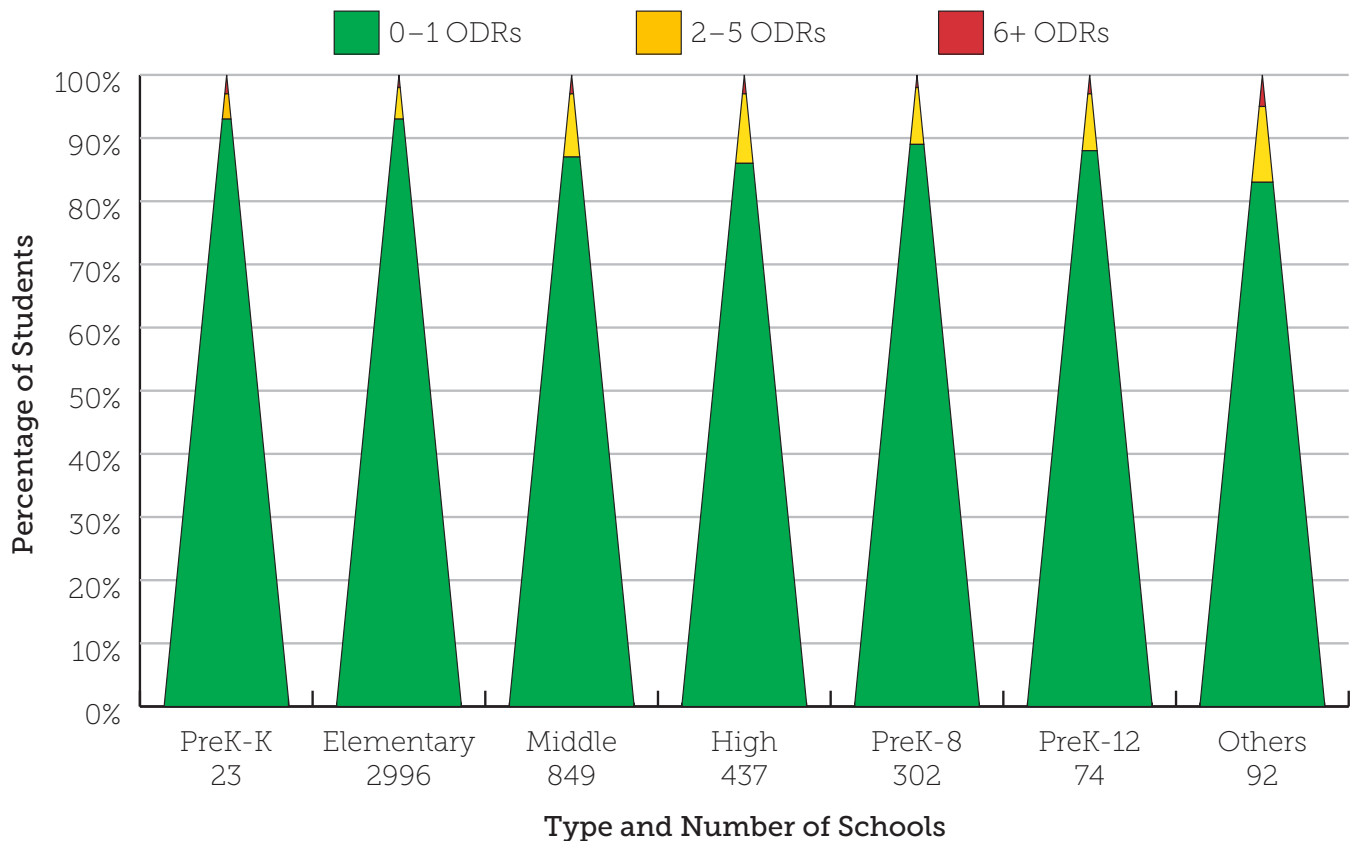
ISS=in-school suspension; (#)=standard deviation; ISS data revised August 2018

OUT-OF-SCHOOL SUSPENSIONS

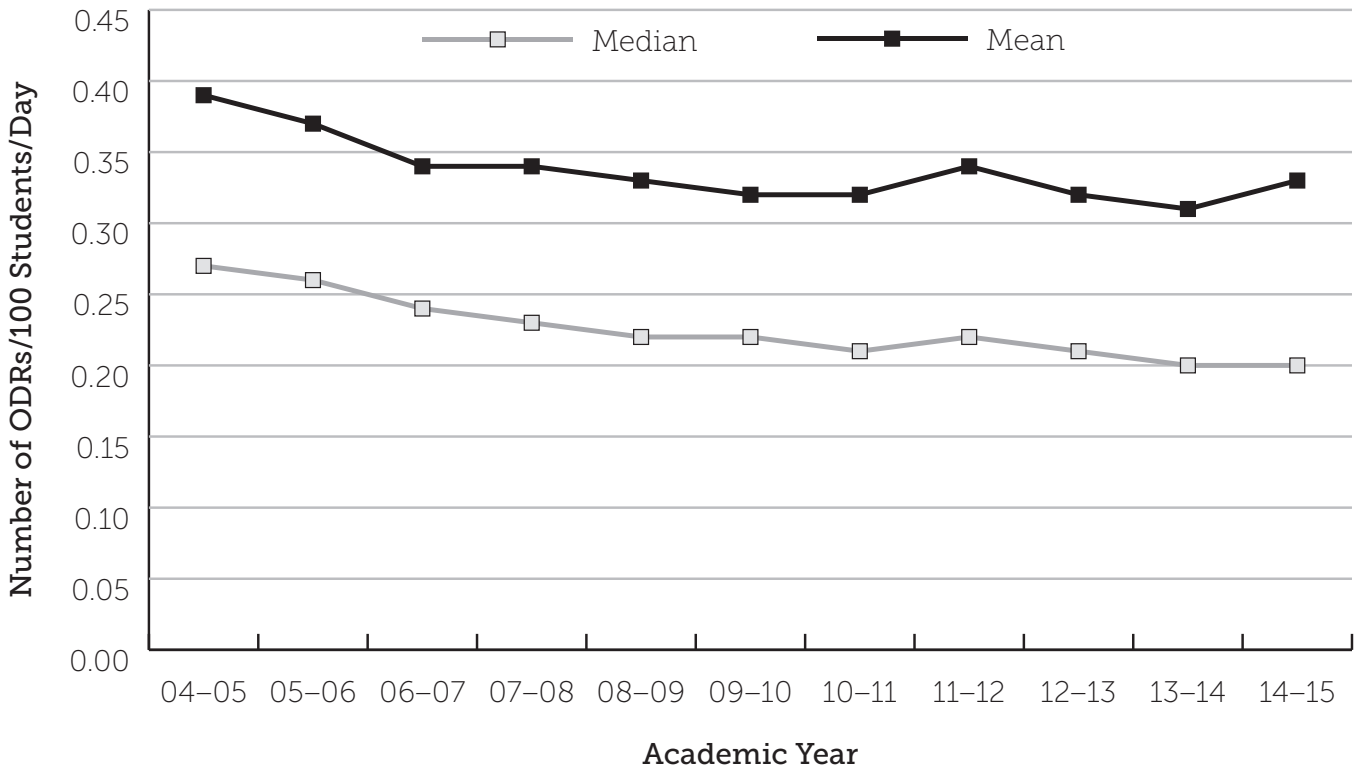
Grade Range	Number of Schools	Mean Enrollment per School	Mean Count of Students with OSS/ 100 Students	Mean Count of OSS Events/100 Students	Mean Count of Days of OSS
K-6	2997	449	22.1 (3.46)	3.81 (7.32)	6.07 (13.12)
6-9	849	663	6.69 (6.95)	11.62 (15.75)	30.78 (48.18)
9-12	439	848	7.06 (7.32)	11.92 (15.92)	35.01 (48.50)
PreK-8	302	425	4.66 (5.80)	8.33 (12.30)	17.77 (28.88)
PreK-12	74	308	4.14 (4.45)	6.86 (9.30)	16.51 (35.00)

OSS=out-of-school suspension; (#)=standard deviation; OSS data revised August 2018

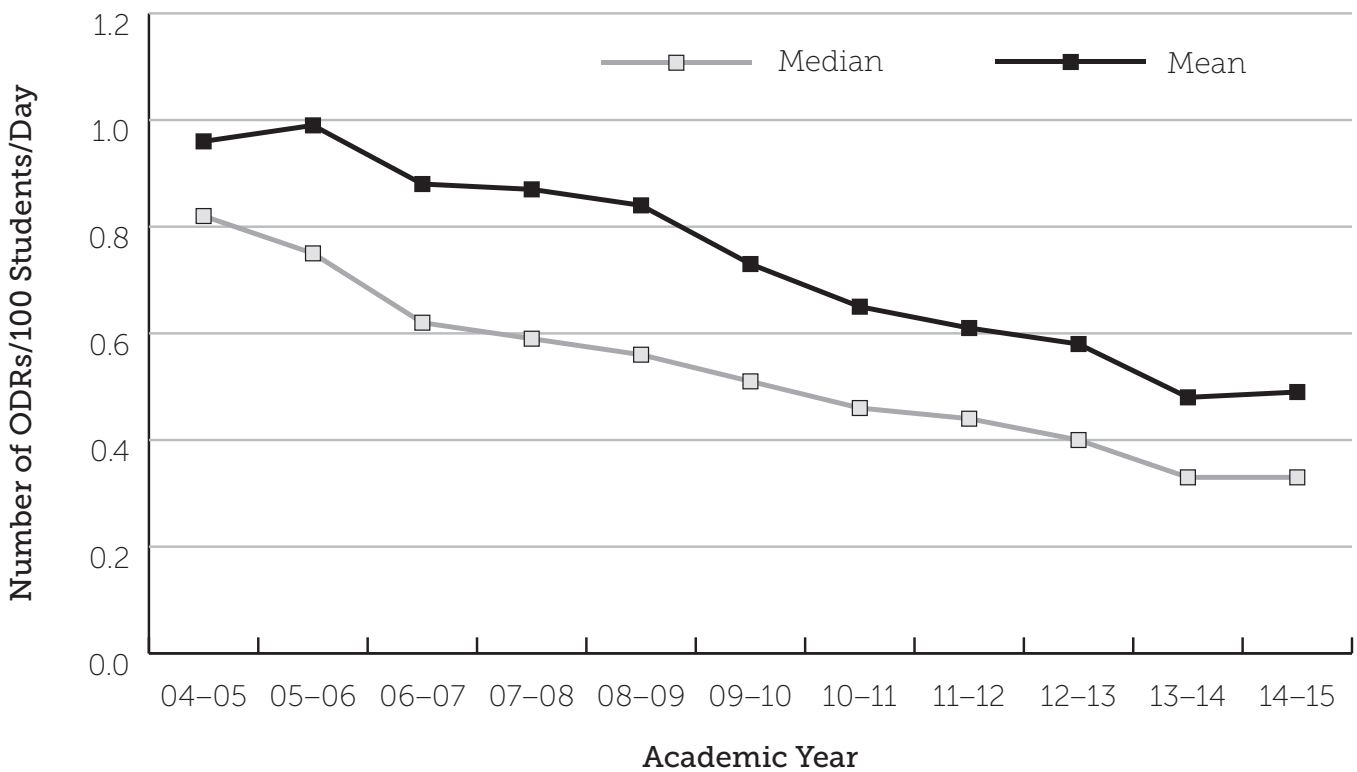
MAJOR ODRs/GRADE LEVEL (TRIANGLE)



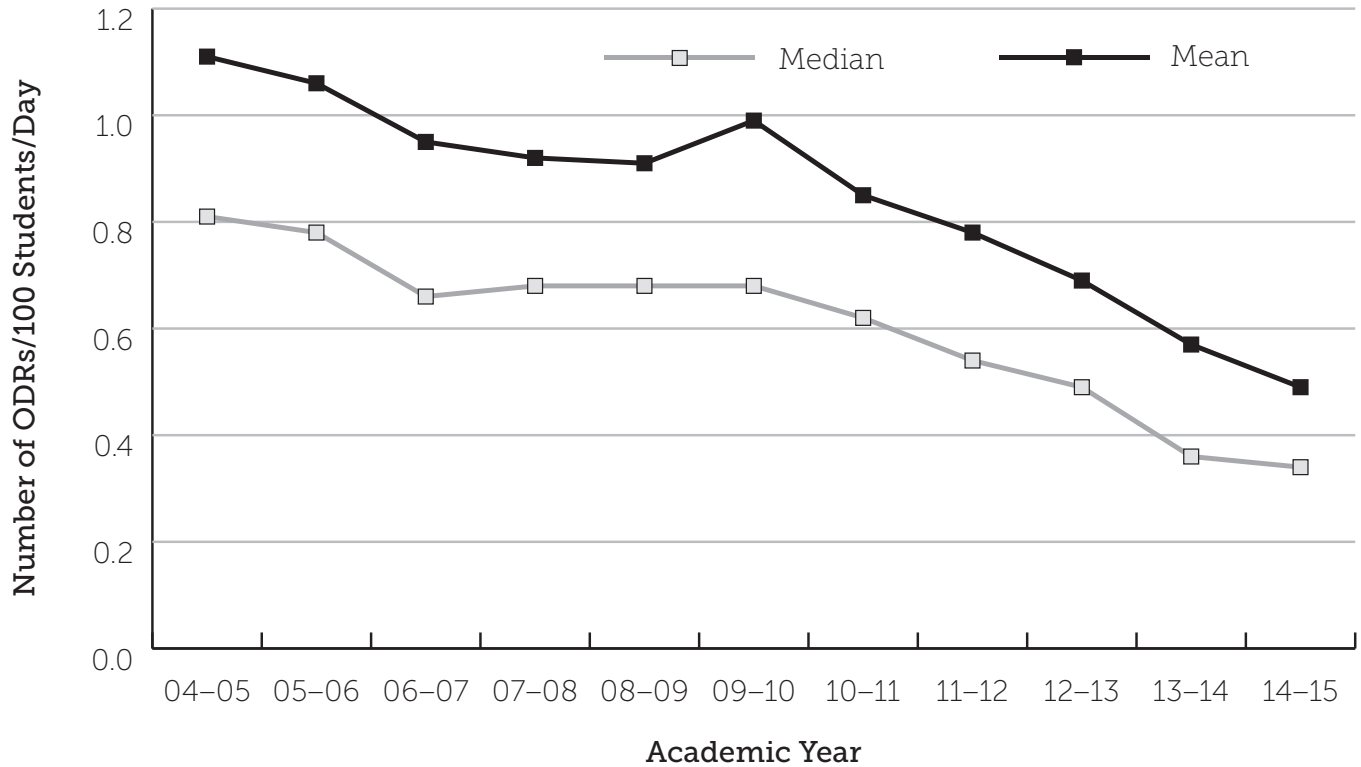
**ELEMENTARY SCHOOL HISTORICAL TREND,
NATIONAL MEDIAN AND MEAN MAJOR ODRs/100 STUDENTS/DAY**



**MIDDLE SCHOOL HISTORICAL TREND,
NATIONAL MEDIAN AND MEAN MAJOR ODRs/100 STUDENTS/DAY**



**HIGH SCHOOL HISTORICAL TREND,
NATIONAL MEDIAN AND MEAN MAJOR ODRs/100 STUDENTS/DAY**



PBISApps.org is the home of web-based applications used by schools, districts, regions, and states in the US and abroad as part of their on-going decision-making processes.

Educators have been using PBISApps for over ten years to make schools safer, more

productive learning environments — empowering them to make data-based decisions in real time.

PBISApps.org is run by Educational & Community Supports, a research unit at the University of Oregon.



www.pbisapps.org | 855-455-8194