



SWIS Summary

2023–24 Academic Year

3738 Schools | 1,874,805 Students | 1,346,489 Admin-Managed (Major) Referrals

Data Reported: October 2024

ADMIN-MANAGED (MAJORS) ONLY

Grade Range	Number of Schools	Mean Enrollment per School	Mean Referrals/ 100 Students/ School Day	Median Referrals/ 100 Students/ School Day	25th Percentile Referrals/ 100 Students/ School Day	75th Percentile Referrals/ 100 Students/ School Day
K-6	2475	428	.44 (.73)	.24	.11	.51
6-9	645	578	.65 (.94)	.42	.18	.79
9-12	387	891	.42 (.43)	.28	.14	.54
PreK-8	231	417	.35 (.38)	.24	.11	.45

(#) = standard deviation; Shaded column = most useful for decision making

continued on next page

STAFF-MANAGED (MINORS) ONLY

Grade Range	Number of Schools	Mean Enrollment per School	Mean Referrals/ 100 Students/ School Day	Median Referrals/ 100 Students/ School Day	25th Percentile Referrals/ 100 Students/ School Day	75th Percentile Referrals/ 100 Students/ School Day
K-6	2278	422	.57 (.92)	.34	.15	.67
6-9	574	570	.80 (.95)	.53	.26	1.05
9-12	330	857	.40 (.71)	.20	.08	.42
PreK-8	213	406	.66 (.72)	.46	.24	.80

(#) = standard deviation; Shaded column = most useful for decision making

IN-SCHOOL SUSPENSIONS

Grade Range	Number of Schools	Mean Enrollment per School	Mean Count of Students with ISS/ 100 Students	Mean Count of ISS Events/100 Students	Mean Count of Days of ISS
K-6	2475	428	1.55 (2.83)	2.40 (6.36)	2.23 (7.73)
6-9	645	578	7.68 (8.29)	14.60 (21.00)	19.64 (33.86)
9-12	387	891	5.75 (6.98)	10.83 (18.20)	14.35 (24.95)
PreK-8	231	417	2.58 (3.50)	3.84 (5.85)	4.18 (7.36)

ISS = in-school suspension; (#) = standard deviation

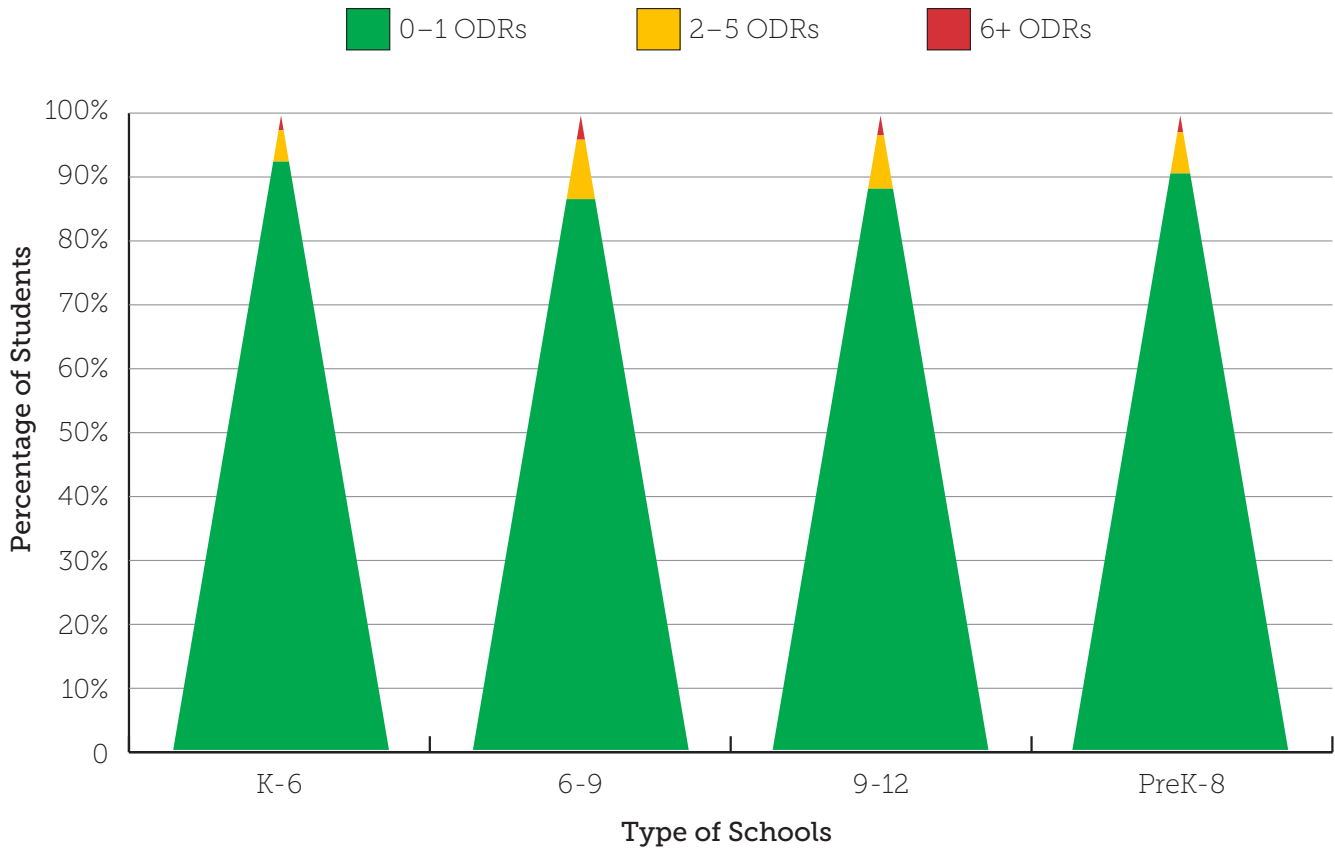
OUT-OF-SCHOOL SUSPENSIONS

Grade Range	Number of Schools	Mean Enrollment per School	Mean Count of Students with OSS/ 100 Students	Mean Count of OSS Events/100 Students	Mean Count of Days of OSS
K-6	2475	428	2.17 (3.43)	4.07 (8.00)	6.34 (16.31)
6-9	645	578	8.09 (7.90)	14.07 (16.08)	38.68 (51.68)
9-12	387	891	6.86 (7.02)	11.04 (16.47)	39.68 (68.39)
PreK-8	231	417	3.26 (4.92)	5.52 (10.27)	11.50 (24.78)

OSS = out-of-school suspension; (#) = standard deviation

continued on next page

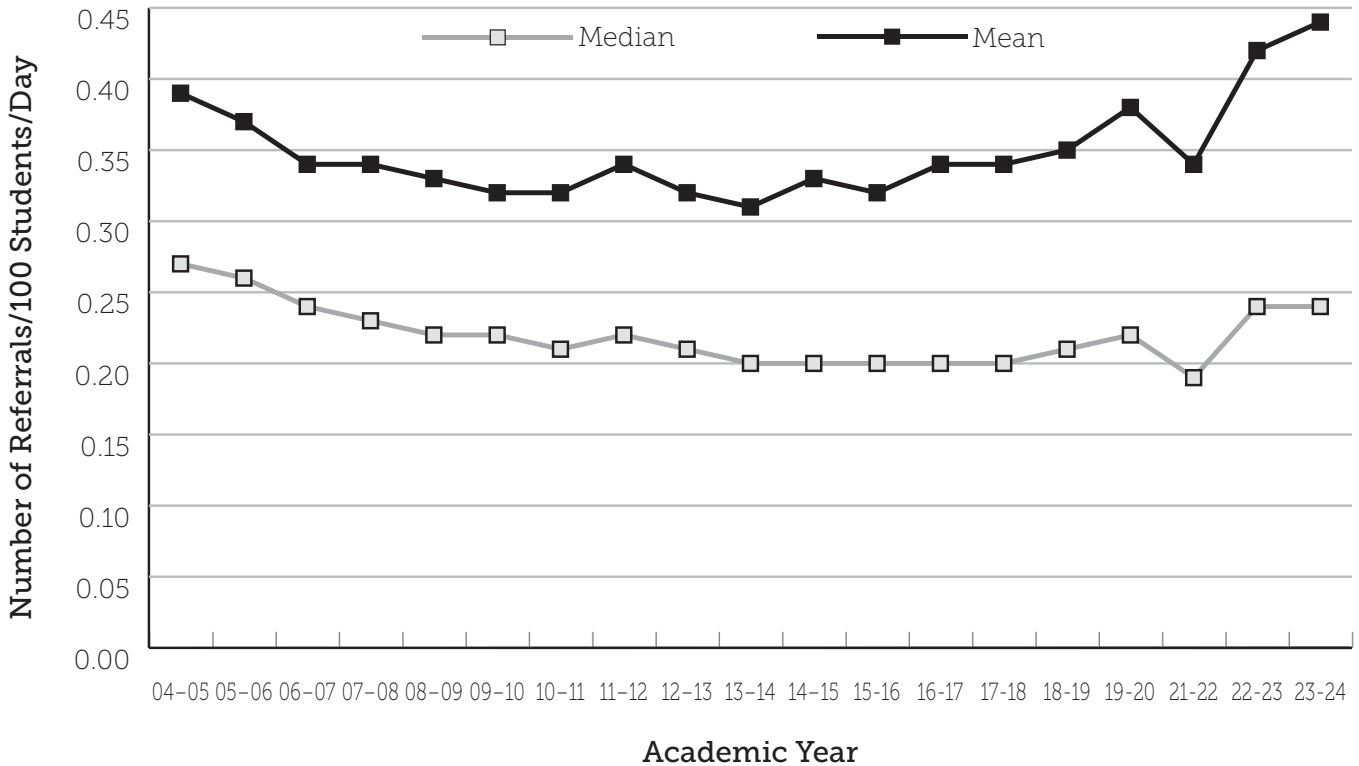
ADMIN-MANAGED (MAJOR) REFERRALS/GRADE LEVEL (TRIANGLE)



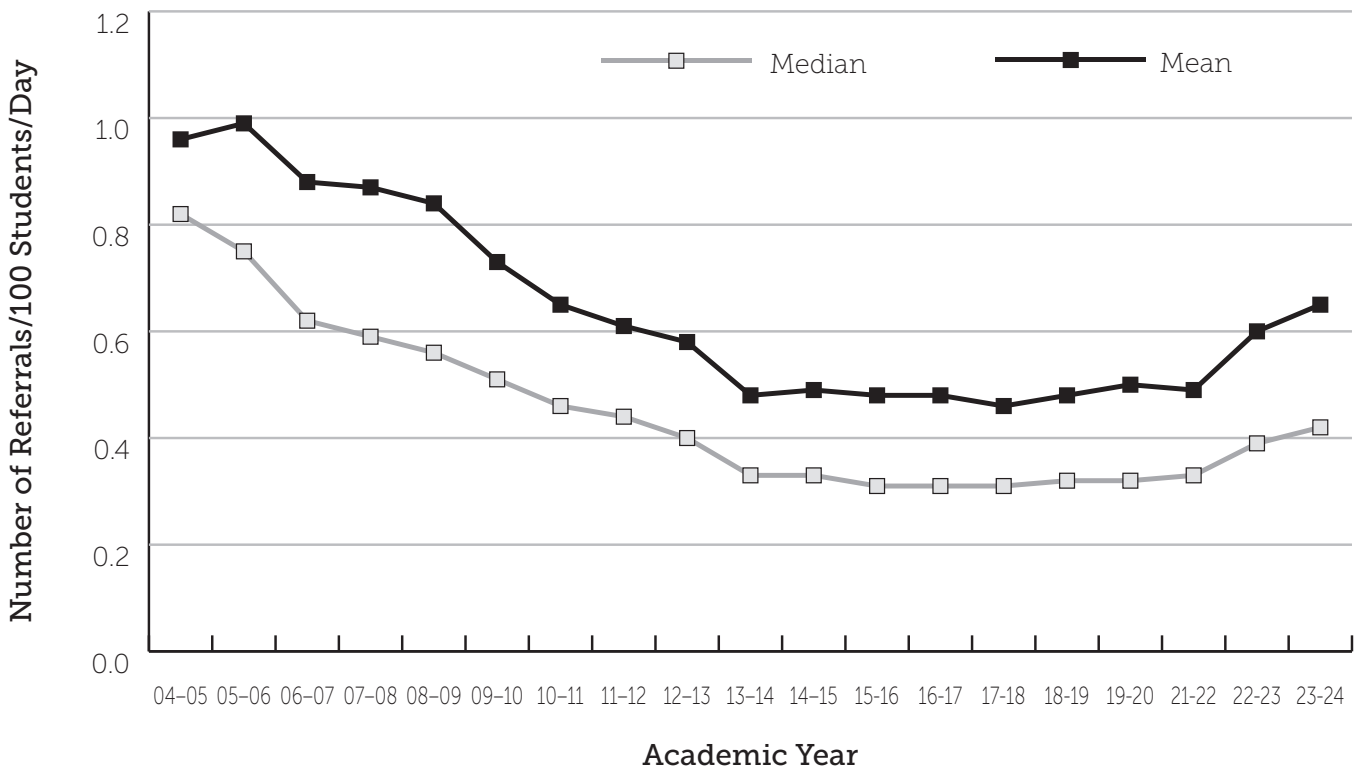
ADMIN-MANAGED (MAJOR) REFERRALS/GRADE LEVEL

Grade Range	Number of Schools	Mean Enrollment per School	Mean Percent of Students with 0-1 Referrals	Mean Percent of Students with 2-5 Referrals	Mean Percent of Students with 6+ Referrals
K-6	2475	428	90.99%	5.89%	3.13%
6-9	645	578	84.68%	10.37%	4.95%
9-12	387	891	87.70%	8.97%	3.33%
PreK-8	231	417	90.61%	6.70%	2.68%

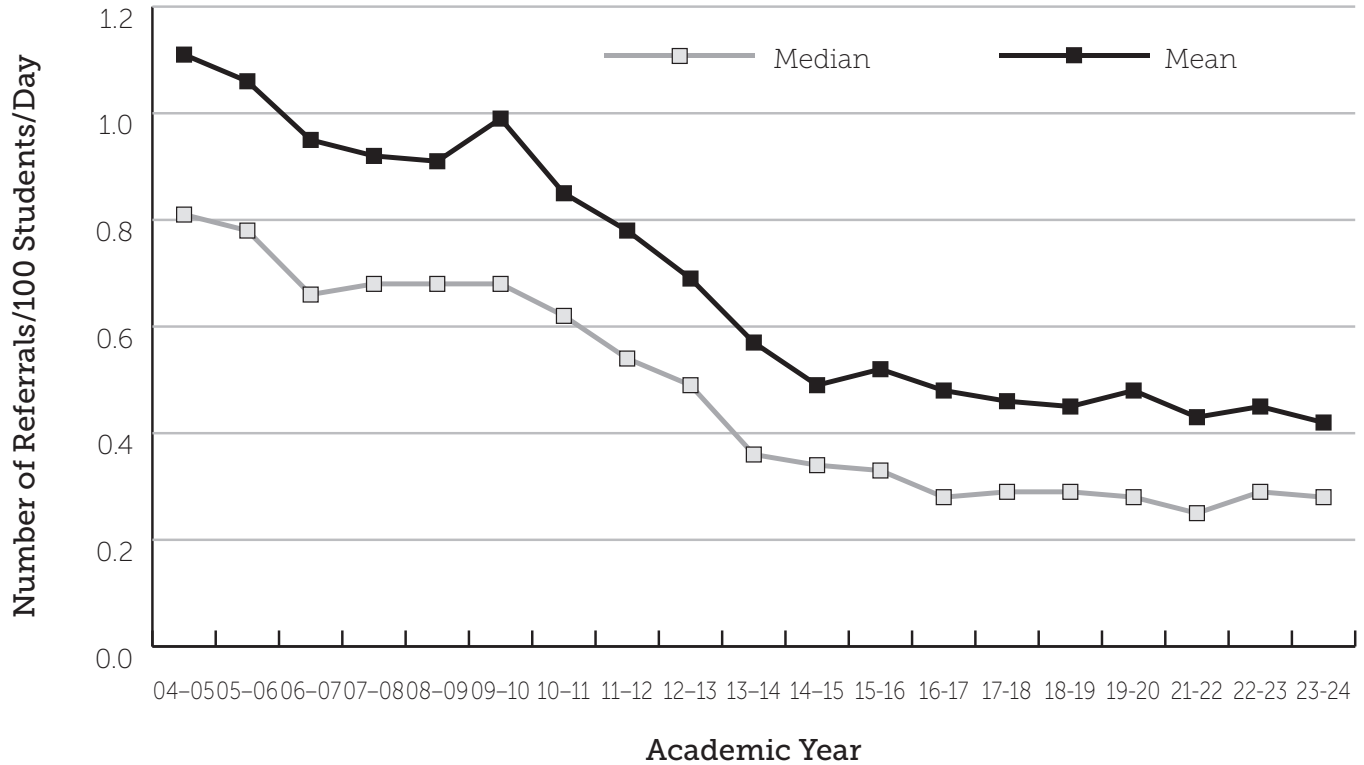
ELEMENTARY SCHOOL HISTORICAL TREND, NATIONAL MEDIAN AND MEAN ADMIN-MANAGED (MAJOR) REFERRALS/100 STUDENTS/DAY



MIDDLE SCHOOL HISTORICAL TREND, NATIONAL MEDIAN AND MEAN ADMIN-MANAGED (MAJOR) REFERRALS/100 STUDENTS/DAY



HIGH SCHOOL HISTORICAL TREND, NATIONAL MEDIAN AND MEAN ADMIN-MANAGED (MAJOR) REFERRALS/100 STUDENTS/DAY



Note: Due to the large variations in learning modalities (e.g., remote, in-person) between communities caused by the COVID-19 pandemic, data from the 2020-21 school year are not included in the historical trend graphs.

The way we refer to student behavior has evolved. In 2023 three labels in our apps have changed and are reflected in this report: Major and Minor referrals are now Administrator-managed and Staff-managed and Office Discipline Referral (ODR) is now Referral.

PBISApps.org is the home of web-based applications used by schools, districts, regions, and states in the US and abroad as part of their on-going decision-making processes.

Educators have been using PBISApps for over ten years to make schools safer, more

productive learning environments — empowering them to make data-based decisions in real time.

PBISApps.org is run by Educational & Community Supports, a research unit at the University of Oregon.



www.pbisapps.org | 855-455-8194